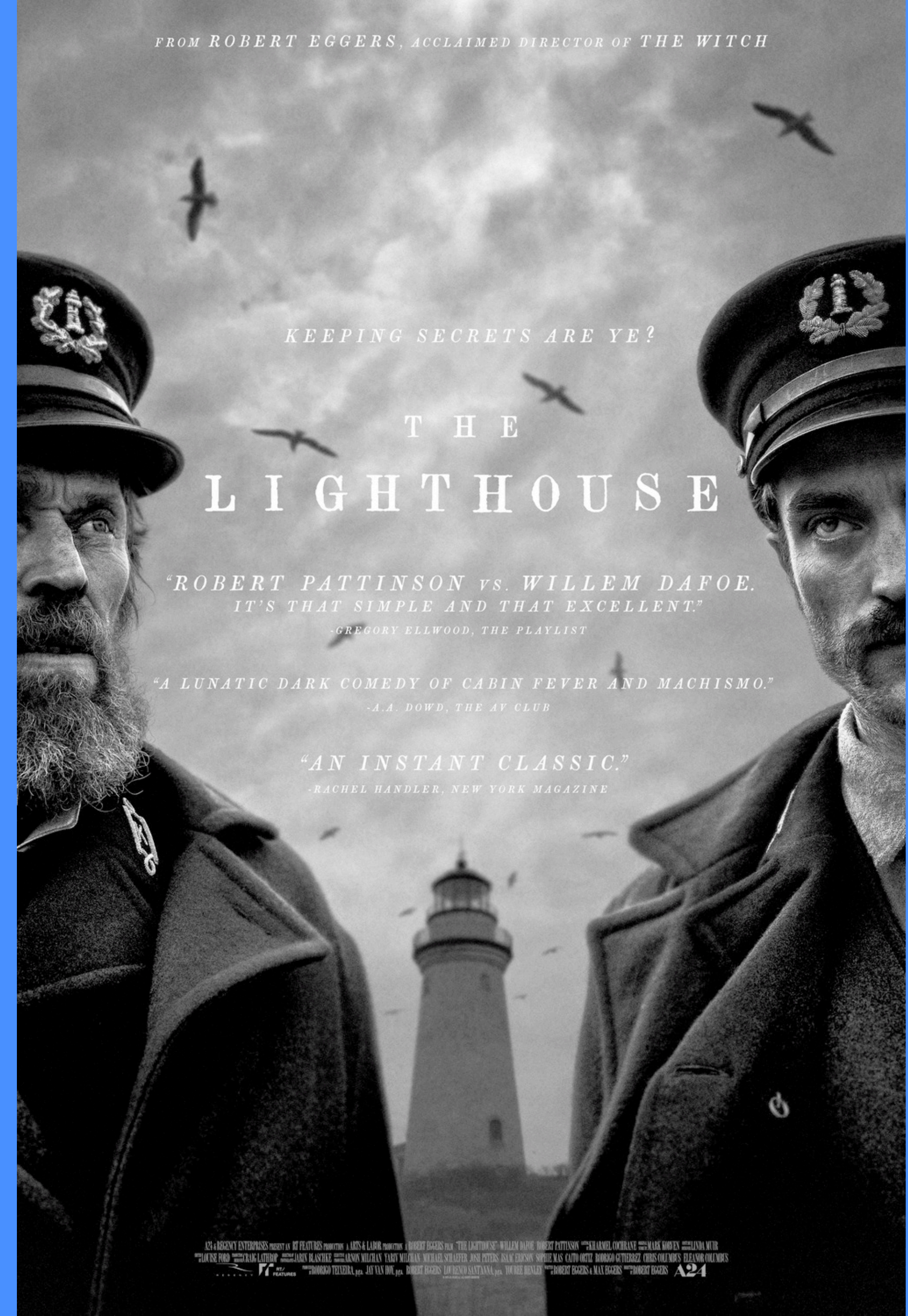


**Let's start with a short story**

# A client with measurable performance requirements

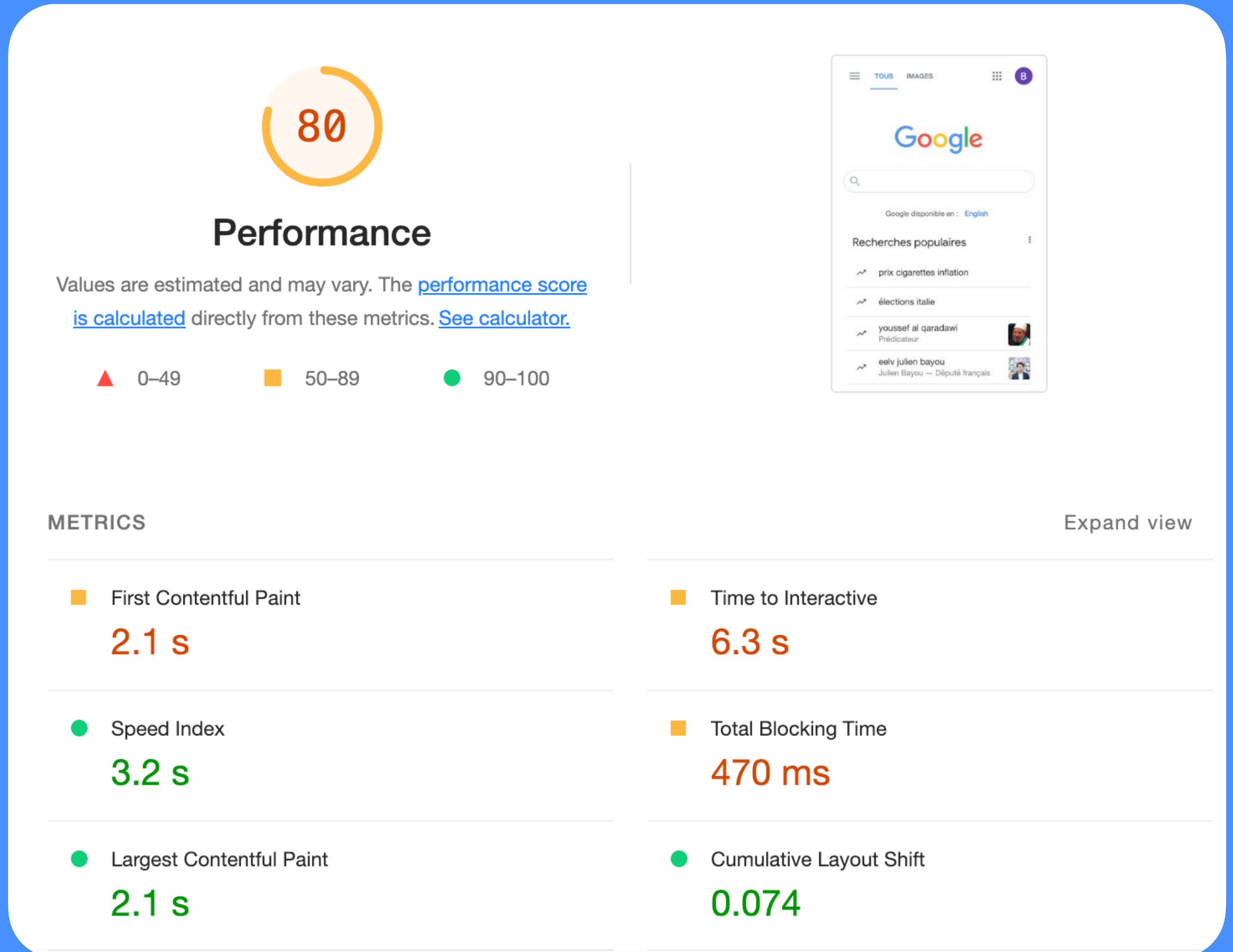
On web: 90+ Lighthouse score on desktop 🔥







# Example Lighthouse Report



# A client with measurable performance requirements

On web: 90+ Lighthouse score on desktop 🔥

On mobile: “It should not lag” 😄💧

# A client with measurable performance requirements

On web: 90+ Lighthouse score on desktop 🔥

On mobile: “It should not lag” 😅

**How do I know if my app has**  
**good performance?** 🤔



# Alexandre Moureaux

## App performance expert at

theodo.  
Apps

in



[@almouro](#)

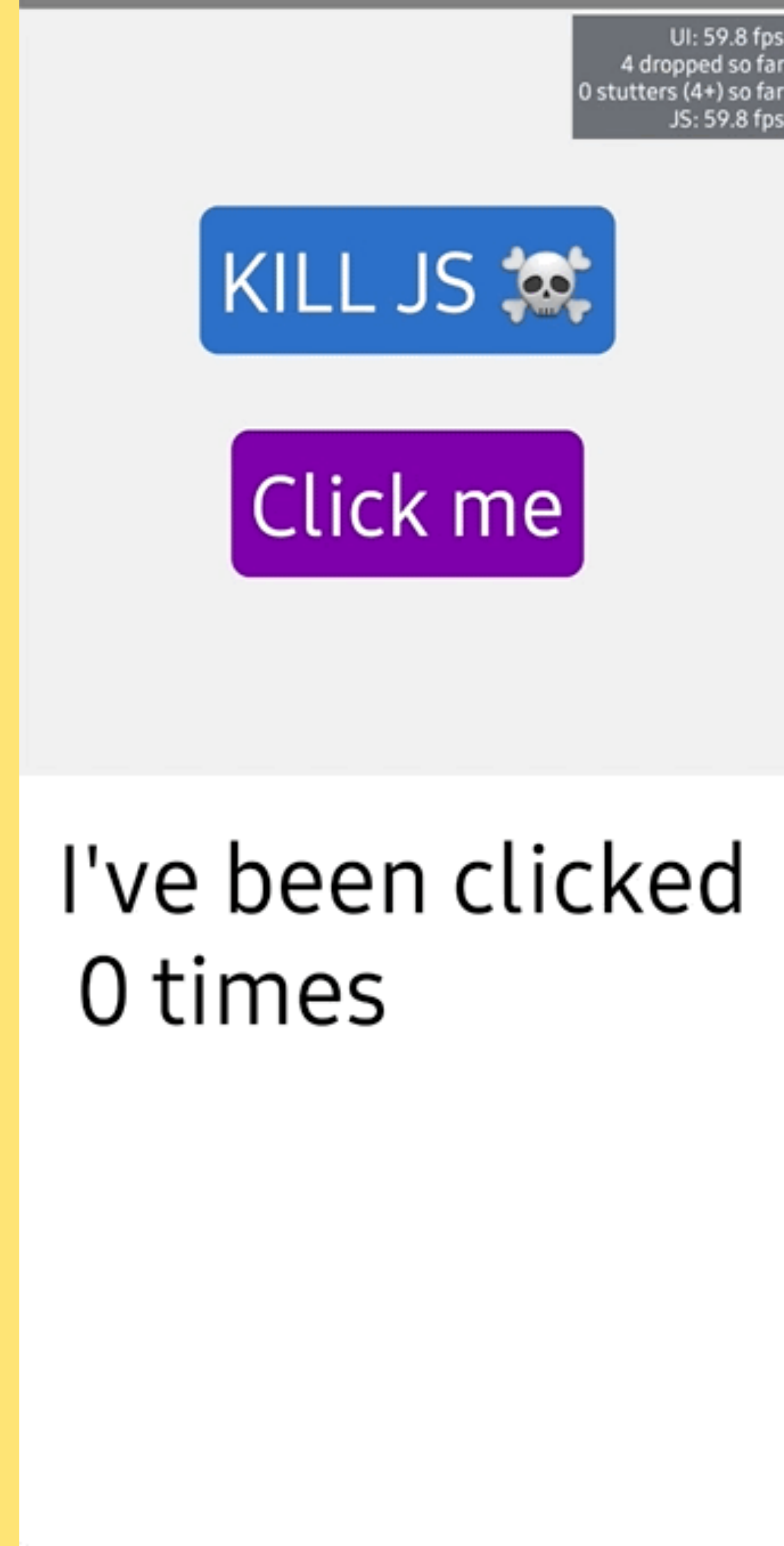


How do I know if my app has  
good performance? 🤔

How do I know if my app has  
good performance? 🤔

🔥 60 FPS

Some other metrics  
like CPU Usage  
come into play



# FPS is not enough

✓ 60 FPS at 50% CPU

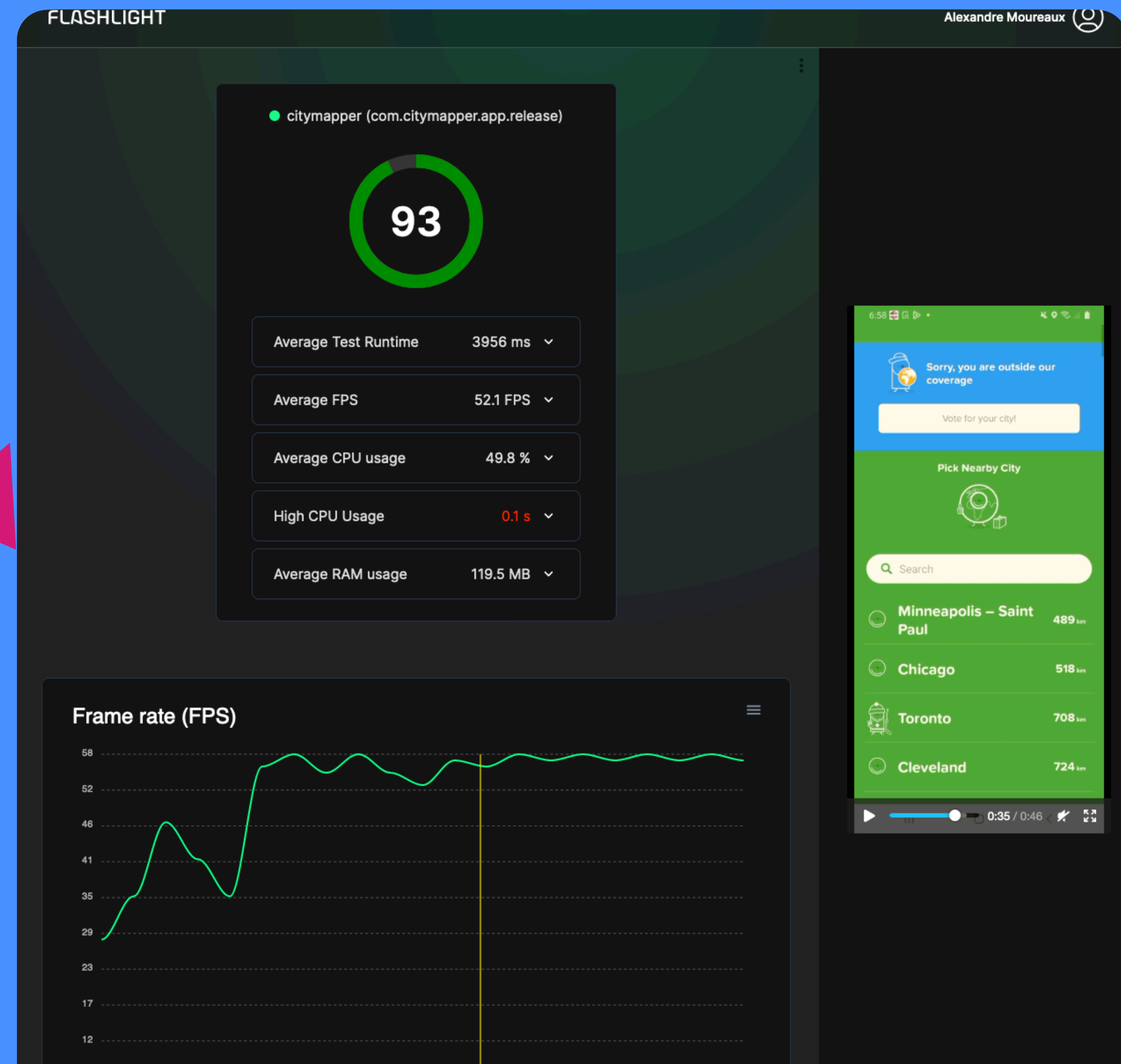
✗ 60 FPS at 100% CPU



# FLASHLIGHT 🔦, a mobile lighthouse

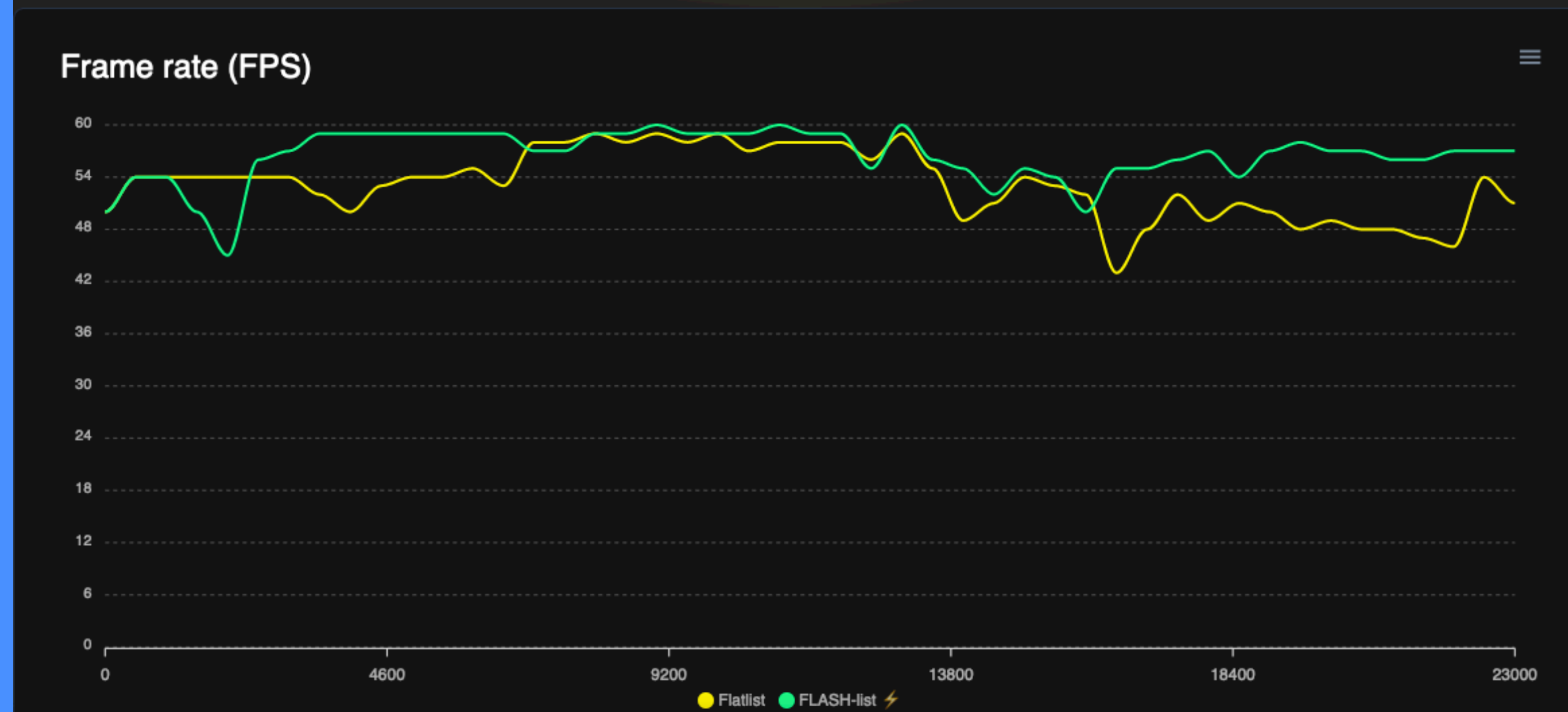
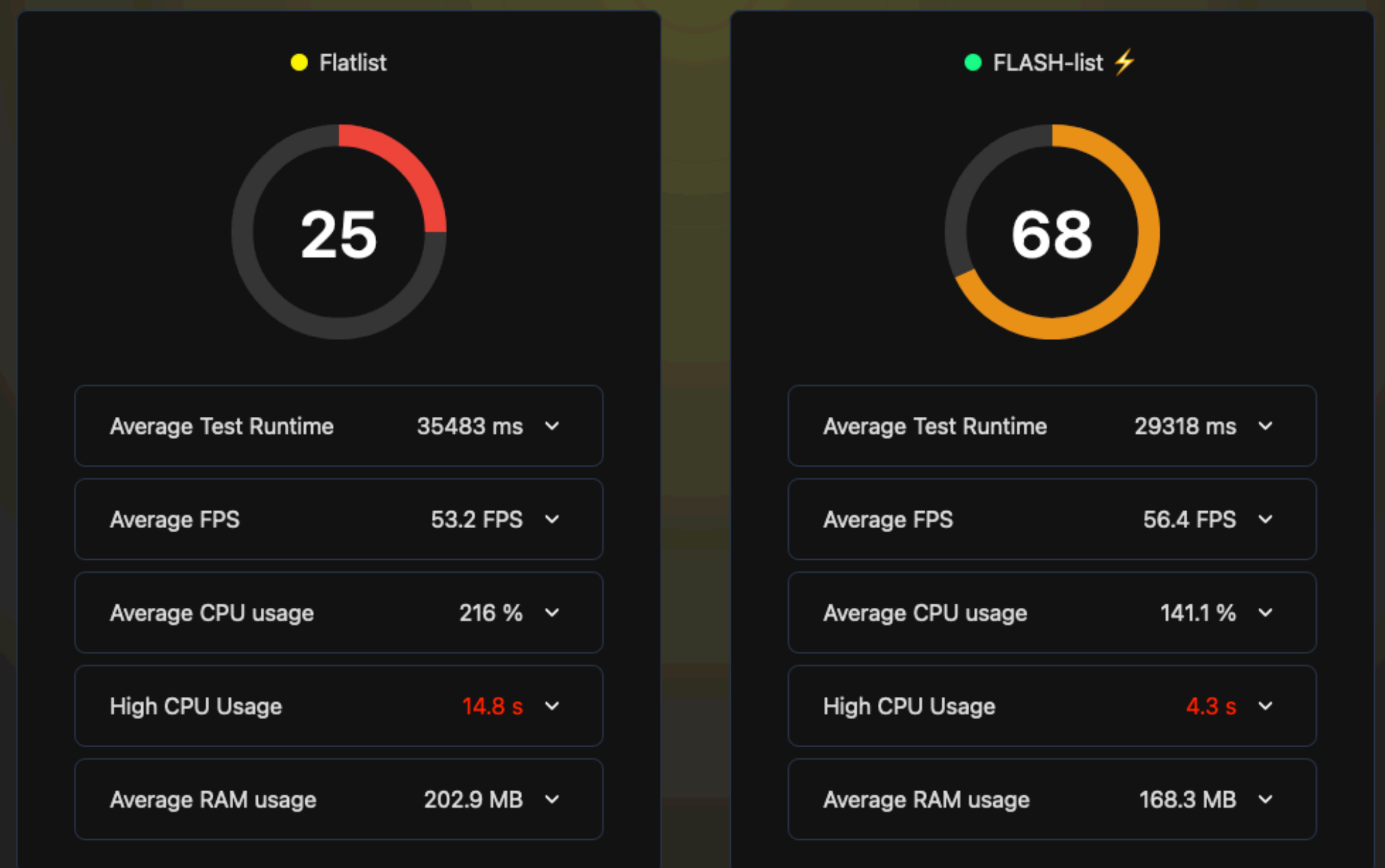


**Drag & drop your APK**



# FLASHLIGHT

It's open source! 🎉



# FLASHLIGHT - the 3 pillars

- 🙅 No setup required in your app
- 🚀 Supports **release** apps
- 🙇 Tech agnostic (native/Flutter/RN)

**Live** Coding!



**Live** Kotlin!

# Let's recap

- Perf measures are crucial but complex 🔥
- Android/Linux = a lot of power out of the box 💪
- Isn't it fun to dive deeper into what we know? 🧐



- 🔗 Link to the repo
- 🙏 Leave feedback
- 📖 Slides/Resources